

REFERENCE PLAN:
"THE SUBDIVISION REGULATIONS OF THE TOWN OF MAZON ARE A PART OF THIS PLAN AND APPROVAL OF THIS PLAN IS CONTINGENT ON COMPLETION OF ALL THE REQUIREMENTS OF SAID SUBDIVISION REGULATIONS, EXCEPTING ONLY ANY VARIANCES OR MODIFICATIONS MADE IN WRITING BY THE BOARD AND ATTACHED HERETO."

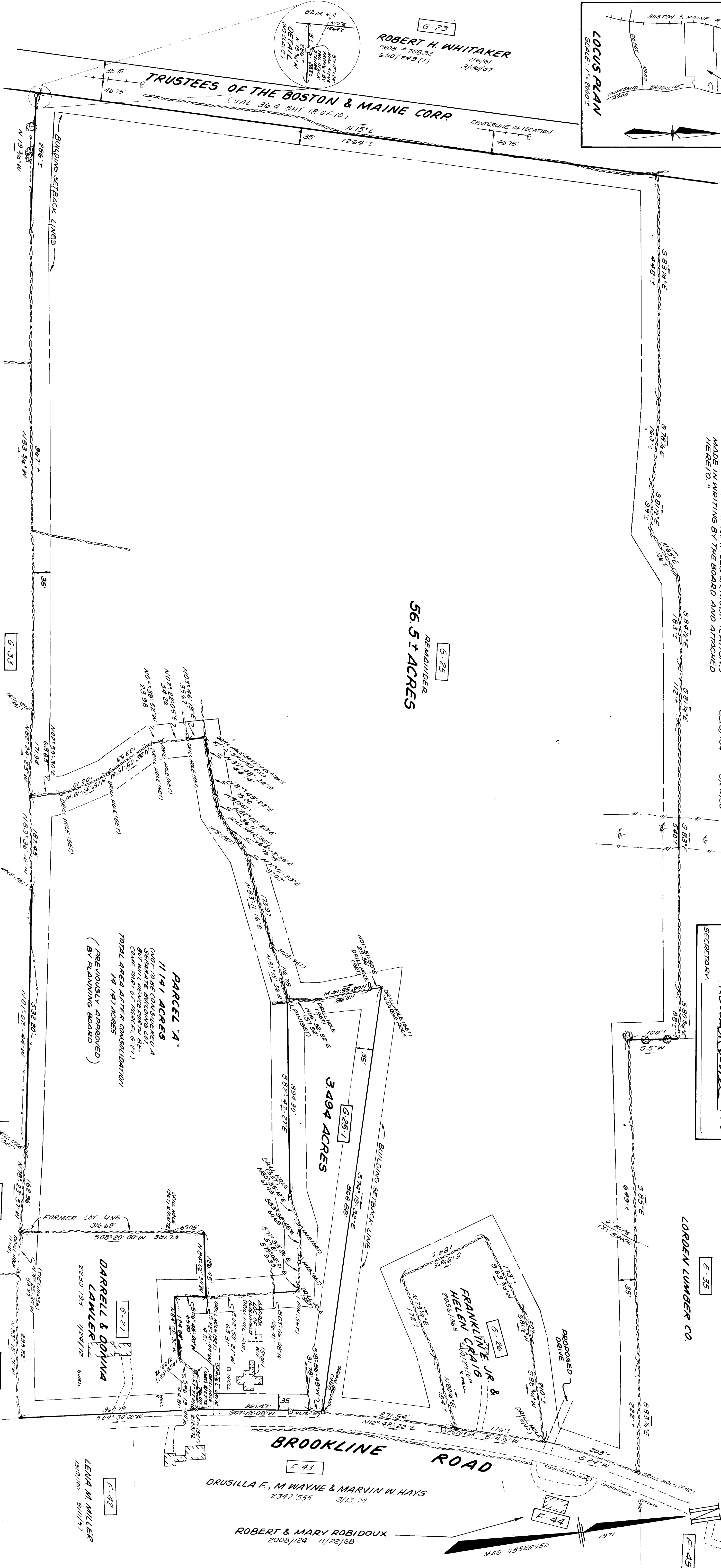
APPROVED BY THE MAZON PLANNING BOARD
ON MAY 28, 1981 CERTIFIED BY
CHAIRMAN Kenneth Dorman AND
SECRETARY Sandra K. Hatfield

6-23
ROBERT H. WHITAKER
2008/288.32 11/6/61
650/249 (1) 3/30/67

6-25
REMAINDER
56.5 ± ACRES

6-36
SANDRA K. HATFIELD
288/134 8/29/60

6-35
DONALD A. ADAMSTON
& CAROLAN HAYLIN
2783/243 8/21/60



NOTES:
1. OWNER OF RECORD IS ESTATE OF LILLIAN M. VALYOU, C/O DONNA LAWLER, BROOKLINE RD., MAZON, N.H. TITLE WAS DERIVED FROM PARCels # 106600, DATED OCT. 19, 1979 FOR DESCRIPTION SEE VOL. 434 P. 435 DATED 7/11/85.
2. TOTAL AREA OF PARCEL BEING SUBDIVIDED IS 60.1 ACRES EXCLUDING PARCEL "A".
3. THIS PLAN IS THE RESULT OF A COMPASS AND TAPE SURVEY MADE ON THE GROUND BETWEEN JUNE 21, 1980 AND JUNE 21, 1981. THE SURVEY WAS MADE BY THOMAS F. MORAN, INC. THE RESULT OF A RECHECK SURVEY, PARCELS 6, 7, 14, 15, 16, 17, 18, 19, 20, 21, 22, 23, 24, 25, 26, 27, 28, 29, 30, 31, 32, 33, 34, 35, 36, 37, 38, 39, 40, 41, 42, 43, 44, 45, 46, 47, 48, 49, 50, 51, 52, 53, 54, 55, 56, 57, 58, 59, 60, 61, 62, 63, 64, 65, 66, 67, 68, 69, 70, 71, 72, 73, 74, 75, 76, 77, 78, 79, 80, 81, 82, 83, 84, 85, 86, 87, 88, 89, 90, 91, 92, 93, 94, 95, 96, 97, 98, 99, 100, 101, 102, 103, 104, 105, 106, 107, 108, 109, 110, 111, 112, 113, 114, 115, 116, 117, 118, 119, 120, 121, 122, 123, 124, 125, 126, 127, 128, 129, 130, 131, 132, 133, 134, 135, 136, 137, 138, 139, 140, 141, 142, 143, 144, 145, 146, 147, 148, 149, 150, 151, 152, 153, 154, 155, 156, 157, 158, 159, 160, 161, 162, 163, 164, 165, 166, 167, 168, 169, 170, 171, 172, 173, 174, 175, 176, 177, 178, 179, 180, 181, 182, 183, 184, 185, 186, 187, 188, 189, 190, 191, 192, 193, 194, 195, 196, 197, 198, 199, 200, 201, 202, 203, 204, 205, 206, 207, 208, 209, 210, 211, 212, 213, 214, 215, 216, 217, 218, 219, 220, 221, 222, 223, 224, 225, 226, 227, 228, 229, 230, 231, 232, 233, 234, 235, 236, 237, 238, 239, 240, 241, 242, 243, 244, 245, 246, 247, 248, 249, 250, 251, 252, 253, 254, 255, 256, 257, 258, 259, 260, 261, 262, 263, 264, 265, 266, 267, 268, 269, 270, 271, 272, 273, 274, 275, 276, 277, 278, 279, 280, 281, 282, 283, 284, 285, 286, 287, 288, 289, 290, 291, 292, 293, 294, 295, 296, 297, 298, 299, 300, 301, 302, 303, 304, 305, 306, 307, 308, 309, 310, 311, 312, 313, 314, 315, 316, 317, 318, 319, 320, 321, 322, 323, 324, 325, 326, 327, 328, 329, 330, 331, 332, 333, 334, 335, 336, 337, 338, 339, 340, 341, 342, 343, 344, 345, 346, 347, 348, 349, 350, 351, 352, 353, 354, 355, 356, 357, 358, 359, 360, 361, 362, 363, 364, 365, 366, 367, 368, 369, 370, 371, 372, 373, 374, 375, 376, 377, 378, 379, 380, 381, 382, 383, 384, 385, 386, 387, 388, 389, 390, 391, 392, 393, 394, 395, 396, 397, 398, 399, 400, 401, 402, 403, 404, 405, 406, 407, 408, 409, 410, 411, 412, 413, 414, 415, 416, 417, 418, 419, 420, 421, 422, 423, 424, 425, 426, 427, 428, 429, 430, 431, 432, 433, 434, 435, 436, 437, 438, 439, 440, 441, 442, 443, 444, 445, 446, 447, 448, 449, 450, 451, 452, 453, 454, 455, 456, 457, 458, 459, 460, 461, 462, 463, 464, 465, 466, 467, 468, 469, 470, 471, 472, 473, 474, 475, 476, 477, 478, 479, 480, 481, 482, 483, 484, 485, 486, 487, 488, 489, 490, 491, 492, 493, 494, 495, 496, 497, 498, 499, 500, 501, 502, 503, 504, 505, 506, 507, 508, 509, 510, 511, 512, 513, 514, 515, 516, 517, 518, 519, 520, 521, 522, 523, 524, 525, 526, 527, 528, 529, 530, 531, 532, 533, 534, 535, 536, 537, 538, 539, 540, 541, 542, 543, 544, 545, 546, 547, 548, 549, 550, 551, 552, 553, 554, 555, 556, 557, 558, 559, 560, 561, 562, 563, 564, 565, 566, 567, 568, 569, 570, 571, 572, 573, 574, 575, 576, 577, 578, 579, 580, 581, 582, 583, 584, 585, 586, 587, 588, 589, 590, 591, 592, 593, 594, 595, 596, 597, 598, 599, 600, 601, 602, 603, 604, 605, 606, 607, 608, 609, 610, 611, 612, 613, 614, 615, 616, 617, 618, 619, 620, 621, 622, 623, 624, 625, 626, 627, 628, 629, 630, 631, 632, 633, 634, 635, 636, 637, 638, 639, 640, 641, 642, 643, 644, 645, 646, 647, 648, 649, 650, 651, 652, 653, 654, 655, 656, 657, 658, 659, 660, 661, 662, 663, 664, 665, 666, 667, 668, 669, 670, 671, 672, 673, 674, 675, 676, 677, 678, 679, 680, 681, 682, 683, 684, 685, 686, 687, 688, 689, 690, 691, 692, 693, 694, 695, 696, 697, 698, 699, 700, 701, 702, 703, 704, 705, 706, 707, 708, 709, 710, 711, 712, 713, 714, 715, 716, 717, 718, 719, 720, 721, 722, 723, 724, 725, 726, 727, 728, 729, 730, 731, 732, 733, 734, 735, 736, 737, 738, 739, 740, 741, 742, 743, 744, 745, 746, 747, 748, 749, 750, 751, 752, 753, 754, 755, 756, 757, 758, 759, 760, 761, 762, 763, 764, 765, 766, 767, 768, 769, 770, 771, 772, 773, 774, 775, 776, 777, 778, 779, 780, 781, 782, 783, 784, 785, 786, 787, 788, 789, 790, 791, 792, 793, 794, 795, 796, 797, 798, 799, 800, 801, 802, 803, 804, 805, 806, 807, 808, 809, 810, 811, 812, 813, 814, 815, 816, 817, 818, 819, 820, 821, 822, 823, 824, 825, 826, 827, 828, 829, 830, 831, 832, 833, 834, 835, 836, 837, 838, 839, 840, 841, 842, 843, 844, 845, 846, 847, 848, 849, 850, 851, 852, 853, 854, 855, 856, 857, 858, 859, 860, 861, 862, 863, 864, 865, 866, 867, 868, 869, 870, 871, 872, 873, 874, 875, 876, 877, 878, 879, 880, 881, 882, 883, 884, 885, 886, 887, 888, 889, 890, 891, 892, 893, 894, 895, 896, 897, 898, 899, 900, 901, 902, 903, 904, 905, 906, 907, 908, 909, 910, 911, 912, 913, 914, 915, 916, 917, 918, 919, 920, 921, 922, 923, 924, 925, 926, 927, 928, 929, 930, 931, 932, 933, 934, 935, 936, 937, 938, 939, 940, 941, 942, 943, 944, 945, 946, 947, 948, 949, 950, 951, 952, 953, 954, 955, 956, 957, 958, 959, 960, 961, 962, 963, 964, 965, 966, 967, 968, 969, 970, 971, 972, 973, 974, 975, 976, 977, 978, 979, 980, 981, 982, 983, 984, 985, 986, 987, 988, 989, 990, 991, 992, 993, 994, 995, 996, 997, 998, 999, 1000.

6-23
ROBERT H. WHITAKER
2008/288.32 11/6/61
650/249 (1) 3/30/67

6-33
KENNETH DORMAN
288/134 8/29/60

6-31
IRIS WOOD
1044/1432 8/29/67

6-28
ROLAND T. & PATRICIA TWEDDY
2035/77 10/31/63

6-42
LENA M. MILLER
1039/100 9/11/57

6-43
DRUSILLA F. M. WAYNE & MARVIN W. HAYS
2347/555 3/13/74

6-44
ROBERT & MARY ROBIDOUX
2008/124 11/22/68

6-45
M26 OBSERVED

6-46
M26 OBSERVED

6-47
M26 OBSERVED

6-48
M26 OBSERVED

6-49
M26 OBSERVED

6-50
M26 OBSERVED

6-51
M26 OBSERVED

6-52
M26 OBSERVED

6-53
M26 OBSERVED

6-54
M26 OBSERVED

6-55
M26 OBSERVED

6-56
M26 OBSERVED

6-57
M26 OBSERVED

6-58
M26 OBSERVED

6-59
M26 OBSERVED

6-60
M26 OBSERVED

6-61
M26 OBSERVED

6-62
M26 OBSERVED

6-63
M26 OBSERVED

6-64
M26 OBSERVED

6-65
M26 OBSERVED

6-66
M26 OBSERVED

6-67
M26 OBSERVED

6-68
M26 OBSERVED

6-69
M26 OBSERVED

6-70
M26 OBSERVED

6-71
M26 OBSERVED

6-72
M26 OBSERVED

6-73
M26 OBSERVED

6-74
M26 OBSERVED

6-75
M26 OBSERVED

6-76
M26 OBSERVED

6-77
M26 OBSERVED

6-78
M26 OBSERVED

6-79
M26 OBSERVED

6-80
M26 OBSERVED

6-81
M26 OBSERVED

6-82
M26 OBSERVED

6-83
M26 OBSERVED

6-84
M26 OBSERVED

6-85
M26 OBSERVED

6-86
M26 OBSERVED

6-87
M26 OBSERVED

6-88
M26 OBSERVED

6-89
M26 OBSERVED

6-90
M26 OBSERVED

6-91
M26 OBSERVED

6-92
M26 OBSERVED

6-93
M26 OBSERVED

6-94
M26 OBSERVED

6-95
M26 OBSERVED

6-96
M26 OBSERVED

6-97
M26 OBSERVED

6-98
M26 OBSERVED

6-99
M26 OBSERVED

6-100
M26 OBSERVED

6-101
M26 OBSERVED

6-102
M26 OBSERVED

6-103
M26 OBSERVED

6-104
M26 OBSERVED

6-105
M26 OBSERVED

6-106
M26 OBSERVED

6-107
M26 OBSERVED

6-108
M26 OBSERVED

6-109
M26 OBSERVED

6-110
M26 OBSERVED

6-111
M26 OBSERVED

6-112
M26 OBSERVED

6-113
M26 OBSERVED

6-114
M26 OBSERVED

6-115
M26 OBSERVED

6-116
M26 OBSERVED

6-117
M26 OBSERVED

6-118
M26 OBSERVED

6-119
M26 OBSERVED

6-120
M26 OBSERVED

6-121
M26 OBSERVED

6-122
M26 OBSERVED

6-123
M26 OBSERVED

6-124
M26 OBSERVED

6-125
M26 OBSERVED

6-126
M26 OBSERVED

6-127
M26 OBSERVED

6-128
M26 OBSERVED

6-129
M26 OBSERVED

6-130
M26 OBSERVED

6-131
M26 OBSERVED

6-132
M26 OBSERVED

6-133
M26 OBSERVED

6-134
M26 OBSERVED

6-135
M26 OBSERVED

6-136
M26 OBSERVED

6-137
M26 OBSERVED

6-138
M26 OBSERVED

6-139
M26 OBSERVED

6-140
M26 OBSERVED

6-141
M26 OBSERVED

6-142
M26 OBSERVED

6-143
M26 OBSERVED

6-144
M26 OBSERVED

6-145
M26 OBSERVED

6-146
M26 OBSERVED

6-147
M26 OBSERVED

6-148
M26 OBSERVED

6-149
M26 OBSERVED

6-150
M26 OBSERVED

6-151
M26 OBSERVED

6-152
M26 OBSERVED

6-153
M26 OBSERVED

6-154
M26 OBSERVED

6-155
M26 OBSERVED

6-156
M26 OBSERVED

6-157
M26 OBSERVED

6-158
M26 OBSERVED

6-159
M26 OBSERVED

6-160
M26 OBSERVED

6-161
M26 OBSERVED

6-162
M26 OBSERVED

6-163
M26 OBSERVED

6-164
M26 OBSERVED

6-165
M26 OBSERVED

6-166
M26 OBSERVED

6-167
M26 OBSERVED

6-168
M26 OBSERVED

6-169
M26 OBSERVED

6-170
M26 OBSERVED

6-171
M26 OBSERVED

6-172
M26 OBSERVED

6-173
M26 OBSERVED

6-174
M26 OBSERVED

6-175
M26 OBSERVED

6-176
M26 OBSERVED

6-177
M26 OBSERVED

6-178
M26 OBSERVED

6-179
M26 OBSERVED